



LOTO

S31 Global Thermoplastic Safety Padlock

**BEST
SELLER**



S31 RED

- (4.76mm) diameter shackle fits more applications
- Marine grade 316 stainless steel shackle provides superior corrosion resistance
- (35mm) wide, (48mm) tall thermoplastic body, with 38 mm shackle length
- Patented design complies with the OSHA guideline of “one employee, one padlock, one key”
- Key retaining - ensures padlock is not accidentally left unlocked
- Stands up to chemicals, temperature extremes (from -57 °C to +177 °C.), and is UV stable
- Includes English write-on “Danger” and “Property Of” Labels
- Keyed different 6-pin tumbler cylinder

Yellow dielectric Zenex Thermoplastic Safety Padlock



406YLW

- Plastic shackle helps prevent electrocution and arc flashing, also prevents electrical current from shackle to key
- All components are non-sparking and non-magnetic - plastic, copper, brass
- 38 mm wide, 44mm tall, thermoplastic body, with 38mm shackle length
- Designed exclusively for lockout tagout applications
- Durable, lightweight, non-conductive thermoplastic lock body
- Patented design complies with the OSHA guideline of “one employee, one padlock, one key”
- Key retaining - ensures that padlock is not left unlocked
- Keyed different, 6-pin tumbler with over 40,000 available key changes cylinder

Steel Lockout Hasp

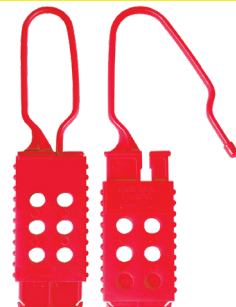
**BEST
SELLER**



420

- Lockout by multiple workers at each lockout point
- Keeps equipment inoperative while repairs or adjustments are being made
- Control cannot be turned on until last worker's safety padlock is removed from hasp
- Heavy gauge steel jaw with red vinyl coated handle
- Dimensions are 1-3/4in x 4-1/2in (44mm x 114mm) with 1in (25mm) inside jaw diameter, holds up to 6 safety padlocks

Plastic Lockout Hasp



428

- Lockout by multiple workers at each lockout point
- Keeps equipment inoperative while repairs or adjustments are made
- Spark proof nylon construction
- Dimensions are 1-5/8" x 6-7/8" (4.1cm x 17.4cm) with 1" x 2-1/2" (2.5cm x 6.3cm) inside jaw diameter, holds up to 6 padlock

Rotating Electrical Plug Lockout



487

- Outward/inward rotation allows for easier application & storage
- Surrounds the electrical plug and protects against accidental reconnection
- Patented rotating design allows for easier installation in confined space applications
- Complete with high-visibility permanent safety labels (English, French & Spanish)
- Tough, lightweight, dielectric thermoplastic bodies withstands chemicals
- Performs effectively in extreme conditions (temperature range -50° F (-46° C) to +350° F (177° C))
- For electrical plug sizes up to 2-1/4in (57mm) in diameter x 3-1/4in (82mm) with cord diameter up to 3/4in (19mm) (Most 110 and many 240-volt plugs)



Rotating Large Electrical Plug Lockout



488

- Outward/inward rotation allows for easier application & storage
- Surrounds the electrical plug and protects against accidental reconnection
- Patented rotating design allows for easier installation in confined space applications
- Complete with high-visibility permanent safety labels (English, French & Spanish)
- Tough, lightweight, dielectric thermoplastic bodies withstands chemicals
- Performs effectively in extreme conditions (temperature range -50° F (-46° C) to +350° F (177° C))
- For electrical plug sizes up to 3" diameter x 6" (7.6cm x 15.2cm) with cord dia. up to 3/4" (1.9cm) (Most 240 and many 550-volt plugs)



Miniature CB Lockout (Black Tab - Standard Toggles)



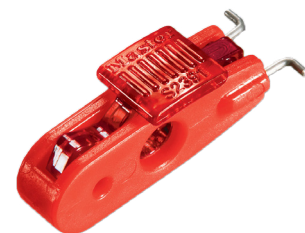
S2390



- Locks out most miniature ISO/DIN circuit breakers throughout the world
- Fits breakers with toggle openings 7/16" (11mm) or less
- Works with all Master Lock and American Lock safety padlocks and hasps
- Patented



Miniature CB Lockout (Red Tab - Wide Toggles)



S2391

- Locks out most miniature ISO/DIN circuit breakers throughout the world
- Fits breakers with toggle openings 7/16" (11mm) to 1/2" (13mm)
- Works with all Master Lock and American Lock safety padlocks and hasps
- Patented



Miniature CB Lockout



S2392

- Miniature Circuit Breaker Lockout (Pins Inward)
- Locks out many miniature ISO/DIN circuit breakers throughout the world
- Fits breakers with lockout holes on the outside of the switch
- Fits openings up to 1/2in (13mm) between lock out holes
- Works with all Master Lock and American Lock safety padlocks and lockout hasps
- Patented

Universal Miniature CB Lockout

**BEST
SELLER**

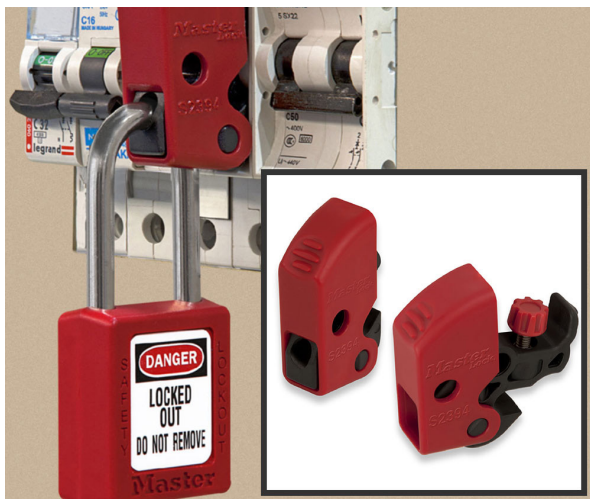


S2393

- Locks out virtually all miniature ISO/DIN circuit breakers throughout the world
- Fits on breakers toggle and can be tightened using screwdriver
- Works with all Master Lock and American Lock safety padlocks and hasps

Universal Miniature Circuit Breaker Lockout Device

**BEST
SELLER**



S2394

- Locks virtually all miniature ISO/DIN circuit breakers throughout the world
- Thumb turn dial screw for easy attachment - no tools required!
- Dial is inaccessible in the locked position to prevent removal
- Padlock can be applied horizontally or vertically
- Can be mounted side-by-side on adjacent miniature circuit breakers
- Durable thermoplastic material is chemical resistant and performs effectively in extreme environments



Grip Tight Plus CB Lockout Device – Miniature CB (120/240 V)



S3821

- Grip Tight Plus Circuit Breaker Lockout Device
- Fits Miniature Circuit Breakers (120/240 V)
- Compatible with a wide variety of circuit breaker handle shapes and sizes
- Compact size allows for locking out vertically and horizontally adjacent breakers
- Suitable for locking out multi-pole breakers and works with tie-bar toggles
- Easy tightening offered by large, knurled thumbscrew with slot for optional screwdriver adjustment
- Requires no tools for installation
- Lightweight, one-piece design



Grip Tight Plus CB Lockout Device – Molded Case CB (480/600 V)



S3822

Grip Tight Plus CB Lockout Device – Molded Case CB (480/600 V)

- Grip Tight Plus Circuit Breaker Lockout Device
- Fits Molded Case Circuit Breakers (480/600 V)
- Compatible with a wide variety of circuit breaker handle shapes and sizes
- Permanently fixed cleat adds physical blocking capability
- Easy tightening offered by large, knurled thumb screw with slot for optional screwdriver adjustment
- Requires no tools for installation
- Lightweight, one-piece design

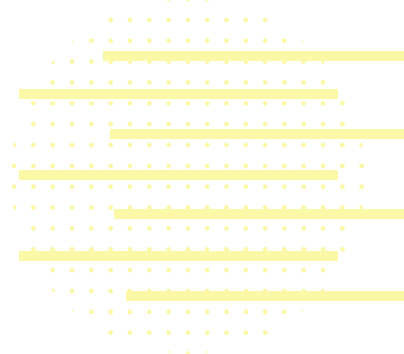


Grip Tight Plus CB Lockout Device – Oversized Handle CB (480/600 V)



S3823

- Grip Tight Plus Circuit Breaker Lockout Device
- Fits Oversized Handle Circuit Breakers (480/600 V)
- Compatible with a wide variety of circuit breaker handle shapes and sizes
- Fold-down cleat provides enhanced switch throw blocking when needed
- Easy tightening offered by large, knurled thumbscrew with slot for optional screwdriver adjustment
- Requires no tools for installation
- Lightweight, one-piece design



Grip Tight CB Lockout



491B

- Fits wide or tall breaker toggles typically found on hi-voltage/hi-amperage breakers
- Innovative patented Grip Tight™ design effectively locks out circuit breakers
- Adjust to breaker with simple thumb turn and then close clamping handle for a tight grip on the toggle
- Great strength with universal fit
- Compact device is easy to carry and easy to store
- Accepts all American Lock and Master Lock safety padlock shackles and lockout hasp diameters
- Durable construction with powder coated steel and reinforced polymer for operation in harsh environments

Grip Tight CB Lockout



493B

- Fits standard height and tie-bar toggles typically found on 120 and 240 volt breakers
- Innovative patented Grip Tight design effectively locks out circuit breakers
- Adjust to breaker with simple thumb turn and then close clamping handle for a tight grip on the toggle
- Great strength with universal fit
- Compact device is easy to carry and easy to store
- Accepts all American Lock and Master Lock safety padlock shackles and lockout hasp diameters
- Durable construction with powder coated steel and reinforced polymer for operation in harsh environments



Universal Quarter Turn Valve Lockout



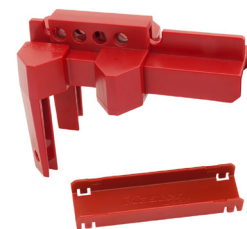
S3080

- Adjustable Ball Valve Lockout
- Easy to use lockout device prevents accidental activation of a closed ball valve
- Adjustable design fits 13mm to 51mm valves
- Durable, lightweight thermoplastic material is chemical resistant and performs effectively in extreme environments
- Removable insert accommodates a wide range of handle designs and dimensions
- Works with S806 cable lockout device for the most secure fit
- Four locking holes to accept all Master Lock and American Lock safety padlocks



**BEST
SELLER**

Adjustable Ball Valve Lockout S3081



S3081

- Adjustable Ball Valve Lockout
- Easy to use lockout device prevents accidental activation of a closed ball valve
- Adjustable design fits 1/2in (13mm) to 2in (51mm) valves
- Durable, lightweight thermoplastic material is chemical resistant and performs effectively in extreme environments
- Removable insert accommodates a wide range of handle designs and dimensions
- Works with S806 cable lockout device for the most secure fit
- Four locking holes to accept all Master Lock and American Lock safety padlocks



Butterfly Valve Lockout, Device Only

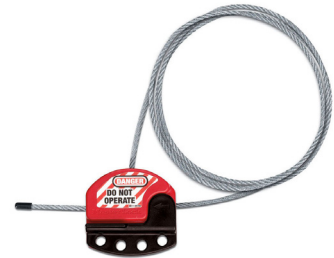


S3920

- Adjustable Butterfly Valve Lockout
- Locks out valve in seconds by feeding S806 cable lockout device through desired eyelet and around valve neck
- Durable, lightweight thermoplastic material is chemical resistant and performs effectively in extreme environments
- Directional application arrows allow for ease of installation and minimize user error
- Stainless steel rivet allows device to smoothly pivot open and closed to ensure proper fit

6' Cable Lockout

**BEST
SELLER**



S806

- Patented 5/32" (4mm) diameter x 6' (1.8) pull-tight cable adjusts for a secure fit every time. Also available from 7 to 50 feet (2.13m to 15.2m) long.
- Integrated safety hasp and cable is ideal for multiple circuit breaker panel and side-by-side gate valve lockouts
- Tough, flexible multi-stranded steel cable is insulated with a clear plastic coating (PVC free)
- Feed the cable end through the points to be locked out, then back through the lockout body
- Cinch it tight to remove any slack with the patented locking feature
- Tough, lightweight thermoplastic body withstands chemicals
- Performs effectively in extreme conditions (-50° F to +300° F (-46° C to 149° C))
- Includes high-visibility, re-usable, write-on safety labels (English, French & Spanish)
- Identify the responsible person, then erase for the next job.



Rotating Gate Valve



1" to 3" diameter
25 mm to 76 mm

480



2" to 5" diameter
51 mm to 12.7 cm

481



4" to 6-1/2" diameter
10.2 cm to 16.5 cm

482



6" to 10" diameter
15.2 cm to 25.4 cm

483



8" to 13" diameter
20.3 cm to 33 cm

484

- Rotating Gate Valve Lockout Device
- Outward/inward rotation allows for easier installation and storage
- Surrounds the valve operating handle to protect against accidental valve opening
- Unique patented rotating design allow for easier installation in confined space applications
- Each size rotates into itself and nests into the next larger size to save space in safety tool boxes
- Center knockout can be removed for rising stem gate valves
- Multiple workers can apply their personal safety padlocks
- Complete with high visibility permanent safety labels (English, French & Spanish) that can be written-on to identify the responsible person
- Tough, lightweight, dielectric thermoplastic bodies withstand chemicals

Deluxe Lockout Station

**BEST
SELLER**



S1900

- Deluxe capacity lockout station holds departmental lockout needs
- 16 hanger clips holds 2 padlocks or hasps each (Total: 32)
- Moveable dividers in top and bottom trays help organize devices
- Holes provided along with bottom for optional peg hook hangers to hang bulky devices
- Each compartment in lower section holds 25 tags each, 150 tags total
- Deluxe Lockout Station comes unfilled
- Measures 23.5" wide x 27" tall x 4.5" deep (59.6cm x 68.5cm x 11.4cm)



Portable Red Group Lock Box - Latch Tight



498A

- Secure each lockout point on a piece of equipment with just one designated lock
- Capture the keys from those lockout points by placing them in the lockout box
- Each authorized employee locks one personal safety lock onto the box, removing them only when their work is complete
- Exclusive Latch Tight feature ensures that keys cannot be accessed until the last lock is removed
- Durable powder-coated red finish with an easy-to-grip, ergonomic handle
- "Lockout" message in English, Spanish and French communicates to all workers
- Accommodates up to 12 workers, more with the use of lockout hasps

Heavy Duty English Tags

**BEST
SELLER**



497A

- 5-3/4" high x 3-1/8" (14.6cm x 7.9cm) wide heavy duty English tags
- 7/16" (11mm) dia. brass grommet accepts all safety padlocks
- Complies with OSHA lockout/tagout standard
- Durable polyester laminate resists water, grease and extreme temperatures
- Heavy duty construction withstands over 50 lbs. (23kg) of pullout force (meets OSHA requirement)
- Customize with name, department, expected completion

Danger Do Not Operate - Safety Tag



S4002

- Safety Tag
- Guardian Extreme process fuses graphics into rugged industrial-grade polypropylene
- Longest lasting tags available
- Stands up to wash downs, humidity, and extreme temperatures
- Use indoors or outdoors
- Stands up to sun, rain, sleet, windborne sand and dirt
- Superior chemical resistance to over 30 chemicals
- Withstands over 80 lbs. (36kg) of pullout force (exceeds OSHA requirement)
- 3 in (76mm) wide x 5-3/4 in (146mm) tall



**Head Office: 17 Zahraa street,
Dokki, Giza
Tel/Fax: +202 3761 4178**

**Showroom: Polygon Sodic
Business Park, Building 4,
El-Sheikh Zayed, Egypt
Tel/Fax: +202 3790 0670
Mobile: +2012 2228 9656**

**E-mail: sales@expo-egypt.com
Website: www.expo-egypt.com**